



Mountain Dream Wedding

Wedding Accommodation & Catering Package





Contact Information

Please inquire about availability for your next function:

Kimberley Alpine Resort Weddings

Phone: (250) 427-9766

Contact: *Angela Peebles*

Email: Weddings@SkiKimberley.com

Stemwinder Restaurant

Phone: (250) 432-0304

Contact: *Shawna Crawford*

Email: FB@SkiKimberley.com





Catering - Food and Beverage

When reviewing this catering package, please note the menu options for the vendor of choice is located under the heading at the top of the page.

All prices listed do not include applicable taxes or service charges.

ALL CATERING ITEMS can be substituted or changed. Prices may vary depending on items requested.

Dinner Catering Options

STEMWINDER BAR & GRILL (BUFFET OPTIONS)

STEMWINDER BAR & GRILL PLATED DINNER OPTIONS

Snack & Drink Menu Pricing (All Venues)

LIQUOR MENU PRICING

SNACK TRAYS





Catering Information

Catering Terms and Conditions

1. Confirmation of event is preferred 6 months in advance; a minimum Venue/Room Rental Non-Refundable Deposit is required upon confirmation. A second deposit of the estimated 75% of food & beverage is required 14 days prior to the schedule date of event. Final attendance numbers are required 14 days in advance of your function; billing for final attendee numbers may not decrease. Billing for the group will be based on the guaranteed number or actual number, whichever is greater.
2. Discounts for menu options; Children 6-12 years receive a 30% discount, Children 5 & under are Complimentary.
3. Cancellation of any food or beverage services more than 14 days but less than 90 days prior to the event date, the Client must pay the owner a charge equal to 75% of the total estimated value; or
4. Cancellation of an event within 14 days the scheduled date will be charged 100% of the estimated value for food or beverage services.
5. All Food and Beverage pricing is subject to 18% Gratuities (Cash bars excluded), prices are subject to change.
6. All food, rental, service and liquor pricing is subject to 5% GST, liquor is also subject to an additional 10%.





Local Vendors and Event Planning

Marriage Commissioner

Tyler Crawford | (250) 427-7558 | withthisringkimberleybc@outlook.com

Ana Pakenham | (250) 427-1182 | anapakenham11@gmail.com

Decorating Service

Sandor Rentals | (250) 426-5254 | www.sandorrentals.com

Spa Services

Blush MediSpa | (250) 417-3417 | Cranbrook | www.blushmedispa.com

Music Services

Ray's Music | (250) 919-7200 | Kimberley | ray@raysmusic.ca

Wild Bills | (250) 701-2263 | Invermere | www.wildbillsdjservices.com

The Testers (live band) | (403) 417-7055 | Kimberley | thetestersband@gmail.com

Don Glasrud | (403) 427-4213 | Kimberley | www.donglasrud.com

Bakery's

Sweet Gestures Chocolate Shoppe | (250) 417-3198 | www.sweetgestures.ca

Taylor Made Cakes | (250) 427-0484 | FB: Taylor Made Cakes by Bronwyn

Photography

Krevan Photography | (250) 427-7196 | www.krevanphotography.ca

Meadow Sweet Photography | (250) 427-0919 | www.meadowsweetphotography.ca

Courtney Jess Photography | www.courtneyjessphotography.com

Megan Strachan Photography | meganstrachanphotography@gmail.com

Matt Kuhn Photography | mkuhnphoto@gmail.com

Trixie Pacis | www.trixiepacis.com

Flowers

Flora Bora Blooms | (250) 431-8324 | Kimberley | www.floraborablooms.com

Noble Flower Co. | (250) 432-9726 | Kimberley | www.nobleflowerco.com

MJ Floral Designs | (250) 426-8659 | Cranbrook | www.mjsfloral.com

Local Churches (Kimberley)

Anglican | (250) 427-2496

Catholic | (250) 427-2585

Pentecostal | (250) 427-4677

Baptist | (250) 427-7316

Lutheran | (250) 427-5414

Presbyterian | (250) 427-4712

United | (250) 427-2428

Transportation and Shuttles

Simply Kimberley

Touch of Class Limousine

Moutnain Shuttle and Cab

(250) 432-9748 | Tod Caton

(250) 919-9455 | Annanete Eugene

(250) 254-8294



Dinner Selections

Dinner Buffet Catering Menu

LOCATION: *Stemwinder Restaurant* - Minimum 50 pax

BUFFET DINNER MENU ONE

Roast Chicken
Vegetarian Lasagna or Tortellini
Oven Roasted Potato
Chef's Vegetable Medley
3 Assorted Salads
Fresh Buns and House Breads
Chef's Dessert

\$38.50 per person

BUFFET DINNER MENU TWO

Roast Beef
Roasted Chicken
Vegetarian Lasagna or Tortellini
Oven Roast or Mashed Potato
Chef's Vegetable Medley
3 Assorted Salads
Fresh Buns and House Breads
Chef's Dessert

\$42.50 per person

BUFFET DINNER MENU THREE

Prime Rib Au Jus
Roast Chicken or BBQ Pork Ribs
Vegetarian Lasagna or Tortellini
Oven Roasted or Mashed Potato
Chef's Vegetable Medley
4 Assorted Salads
Fresh Buns and House Breads
Chef's Special Dessert

\$45.50 per person

*All Dinner Buffets Include Freshly Brewed Regular and Decaffeinated Coffee and Assorted Teas
Catering & other items may be substituted, prices will vary, sales taxes, service fees and gratuities will apply.*



Dinner Selections

Three Course Plated Dinner Menu

LOCATION: **Stemwinder Restaurant** - Minimum 50pax - Maximum 80pax

PLATE SERVICE DINNER MENU ONE

Butter Lettuce Salad with Crisp Leek and Vinaigrette Dressing
Pork Loin with Cinnamon Apple Sauce
Roasted Garlic Mashed Potato
Chef's Vegetable Selection
Chocolate Tart Shell with Raspberry Mousse
\$42.50 per person

PLATE SERVICE DINNER MENU TWO

Mixed Greens with Oranges & Toasted Almonds with Honey Vinaigrette Dressing
Chicken Breast Stuffed with Prosciutto and Mozzarella
Creamer Potatoes
Oven Roasted Vegetables with Fresh Herbs
Chocolate Mousse with house-made Nut Brittle
\$50.00 per person

PLATE SERVICE DINNER MENU THREE

Crisp Romaine Lettuce and Parmesan with Roasted Garlic Caesar Dressing
AAA Prime Rib Au Jus
Creamer Potatoes
Honey Glazed Root Vegetables
Chocolate Cake
\$54.00 per person

All Plated Dinners are Served with Freshly Baked House Breads.

*Freshly Brewed Coffee & Assorted Teas are available with plated dinners, rates are provided on
Snack and beverage page.*

Catering & other items may be substituted, prices will vary, sales taxes, service fees and gratuities will apply.



Snacks & Beverage Selections

All Venues

SNACK TRAYS

	Serves Approx.	Vegetable Tray	Meat Tray	Fruit Tray	Cheese Tray	Dessert Tray
Small Tray	15 people	\$92.00	\$98.00	\$92.00	\$115.00	\$92.00
Medium Tray	25 people	\$175.00	\$225.00	\$175.00	\$225.00	\$175.00
Large Tray	40 people	\$220.00	\$310.00	\$220.00	\$300.00	\$240.00





Cash Bar

Prices listed include ice, glasses, mix and garnishes.

Consumption will be charged on a per drink basis.

A bartender charge of \$25.00 per hour for a minimum of four hours will be applied if total bar sales do not exceed \$250.00

Beverages & Prices

Highball - Standard (1 oz)	\$6.50
Cocktails - Standard (1 oz)	\$6.75 - \$9.50
Domestic Beer	\$6.75
Import Beer	\$7.75
House Wine - by the Glass (6 oz)	\$7.50
Soft Drinks	\$3.50
Juice	\$4.00

Wine by the Bottle

We proudly feature an assortment of Mark Anthony Wines at all of our venues.



Many other wine selections available.

Rates are subject to change based on event requirements.

Catering & other items may be substituted, prices will vary, sales taxes, service fees and gratuities will apply.



SOCAN Music Agreement

Please note the following when booking banquets or events and using live or pre-recorded audio:

SOCAN (Society of Composers Authors and Music Publishers of Canada) requires that the users of music obtain a SOCAN license to perform, or authorize others to perform, copyright music in public. To ensure that the appropriate license is, in fact, in place, the policy of the KIMBERLEY ALPINE RESORT is to collect and remit the required license fee to SOCAN. The fee for an event:

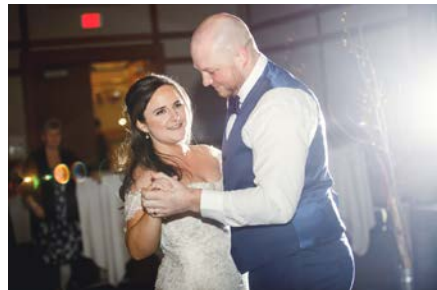
**Trickle Creek Lodge Meeting Rm &
Trickle Creek Club House**

With Dancing \$62.64+GST
Without Dancing \$31.31+GST

Stemwinder

With Dancing \$90.12+GST
Without Dancing \$45.02+GST

Please note that the use of copyright music without a valid SOCAN license may lead to a legal action for copyright infringement under the Copyright Act of Canada.



Reception and Meeting Facilities

All rates noted below DO NOT include the 5% GST.

All rental rates are subject to change based availability and individual requirements.

Wedding Ceremonies

Hotel Hearth Room Wedding Ceremony	\$230
Trickle Creek Clubhouse	\$975
Trickle Creek GR – Hole	\$1500+
KAR Deluxe Skylight Tent Ceremony*	\$700 → \$865
Casual/Formal Receptions with Tent*	\$1400 → \$1800

**If the tent is not required additional fees may apply (minimum \$100.00)*

Room Rental	Full Day	Half Day/ Evening	Wedding Reception
Hotel Half Meeting Room	\$110	\$75	\$300
Hotel Full Meeting Room	\$170	\$110	\$350
Trickle Creek Clubhouse	\$350	\$300	\$850+
Stemwinder Restaurant	\$350	\$300	\$800

Hotel Meeting Room Features

High Speed Internet access
Built-in presentation screens
Patio doors to BBQ/pool deck
Large windows with drapery
Bar Service

Hotel Meeting Room Features

Digital Projector	\$50.00
Flip Chart/Pens	\$25.00
32" Flat Screen TV/DVD Player	\$25.00
Conference Phone	\$25.00
Portable PA System	\$50.00

Trickle Creek Clubhouse accommodates

60-80 people for Banquet Reception
Bar Service (no private events during golf season)

Hotel Half room accommodates

20-25 people for Banquet Reception
30-40 people for Theatre Presentation

Stemwinder Restaurant accommodates

Minimum 50 people – maximum 200 people
(no private events during ski season)

Hotel Full room accommodates

50 people for Banquet Reception
75 people for Theatre Presentation

White Skylight 40X20 Tent - 1040 Square feet

175 people Theatre Style
80-130 Banquet Style
(depending on the type of tables requested)

Hearthroom in Hotel

50 people for Theatre Style

Mountain Dream Wedding

Create ever-lasting memories with a spectacular wedding at the top of the North Star Mountain at the Kimberley Alpine Resort.

Imagine you and your wedding guests taking a chairlift ride to the top of the North Star Mountain where you will be married under the historic T-Bar wedding arch. The views of the mountains will be a memory that you and your guests will remember for a lifetime to come.



After your Romantic Wedding Ceremony, you & your guests may enjoy a Mountain Top Celebration with a small Cocktail service at the Rustic Kootenay Haus before making your way back to the base of the Mountain for your Wedding Reception.

Winter Package

Includes:

Wedding Ceremony at the Top of the Mountain | Cocktail Service at the Kootenay Haus

Package Starting at \$850.00 +GST*

Stand up service in winter months only, maximum of 200 people.

Pricing above includes: A maximum four(4) hour rental of the Chairlift and the Kootenay Haus, Transportation of any Food, Beverages, Bartender, All Serving Supplies, Small Lined Table and Chair for Signing, Microphone and Speakers.

Food or Beverage for Top of the Mountain: All food & beverage orders must be purchased through the resorts catering department. No outside food or alcohol is permitted.

Guest waivers: All guests must be able to ski on & off the chairlift, for which a “one ride” pass must be purchased, starting at \$12.00 per head.

Chairlift Restrictions: The physically disabled and children under the age of 3 are NOT permitted on the chairlift. Children 3-12 are to be accompanied by an adult.

*All the above pricing is subject to change depending on any special requested requirements.



Summer Package

Includes:

Chairlift Ride | Wedding Ceremony | Cocktail Service at the Kootenay Haus

Package Starting at \$3950.00+GST*

Pricing above includes: A maximum four (4) hours rental of the chairlift, Kootenay Haus, Transportation up and down the mountain of the ordered Liquor, Glassware, Linens, Small Table with Chair for Signing, Microphone and Speakers, and White Folding Chairs (max. of 200ppl with chairs).

Food or Beverage for Top of the Mountain: All food & beverage orders must be purchased through the resort's catering department. No outside food or alcohol is permitted.

Guest waivers: The physically disabled and children under the age of 3 are NOT permitted on the chairlift. Children 3-12 are to be accompanied by an adult.

Chairlift Restrictions: (Summer only) Kimberley Alpine Resort may be able to offer a maximum of 2 shuttle vehicles to the top of the North Star Mountain. (maximum 11 guests). All inquiries must be approved and scheduled directly through the resorts Wedding Coordinator.

*Additional shuttle fees apply.

*All the above pricing is subject to change depending on any special requested requirements.

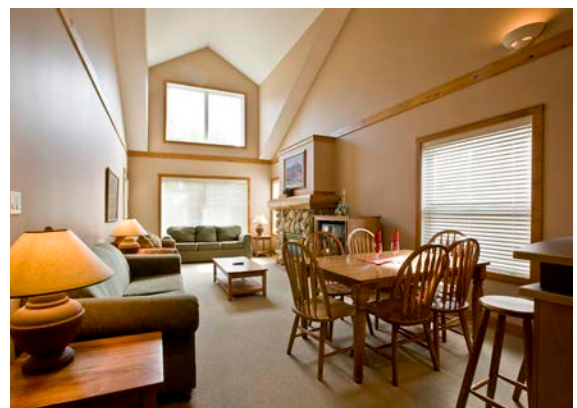
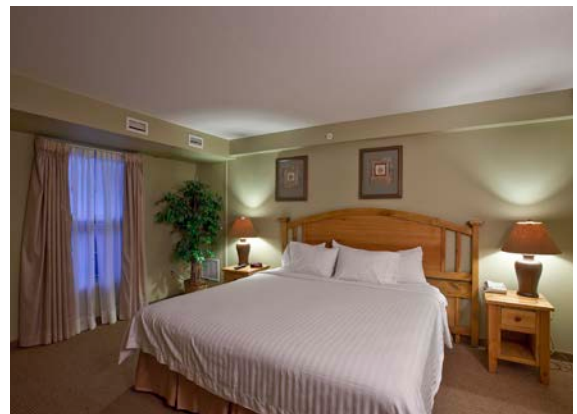




Trickle Creek Lodge



Polaris Lodge



Trickle Creek Lodge

Kimberley BC

Location

Nestled in the heart of the Kimberley Alpine Village, 100 feet from Kimberley Alpine Resort's quad chair ski lift and a short cart path away from Trickle Creek Golf course; Only minutes away from Kimberley's Platzl - featuring a variety of shops and restaurants. Cranbrook Airport is 20 minutes away - Calgary and Spokane are an easy 4-hour drive.

Hotel

This premiere Resort Lodge offers 80 guest suites, including 19 studios, 41 one bedroom and 20 two bedroom units. Guests will enjoy a view of the ski slopes or the majestic Rocky Mountains from their lodge pole pine balcony. Our suites are 50% larger than a regular hotel room, offering separate sleeping and living areas, a work area with two phone lines, a gas fireplace, and a fully equipped kitchen with refrigerator, stove, dishwasher, microwave and coffee maker. Each suite offers a color TV, AM/FM radio, a hair blow drier, iron and ironing board. In addition, there is a year round heated outdoor pool and two large outdoor spas available for your pleasure.

Dining and Entertainment

Located in the hotel is the Buckhorn & Main Eatery and Lounge. Across the Resort Plaza, on the ground floor of the Polaris Lodge is the rustic Stemwinder Restaurant that regularly offers live après ski entertainment with a bar & grill that maintains its family oriented commitment. In Kimberley's downtown Platzl area, guests will find a variety of restaurants including. The Pedal and Tap, The Shed or Stonefire for a relaxing casual dining experience, The Snowdrift Cafe, Bean Tree are sure hits for those who enjoy Ethnic or Vegetarian meals. There are a number of unique retail stores and activities located in the Platzl for your enjoyment.

Guest Amenities

We feature free underground parking, free WIFI high-speed internet access, conference facilities, 24-hour fitness center, year round outdoor heated pool and spas, BBQ patio, on-site coin operated laundry.

Recreational Activities

Trickle Creek Lodge has packages available with any one of the following activities; simply inquire with the sales office for details. In the winter time skiers/snowboarders are only steps away from the high-speed quad at Kimberley Alpine Resort. In the summer, golfers will be pleased that we are located right next to the Trickle Creek Golf Resort rated "One of the Best places to play" in Canada by Score Golf Magazine in 2015 & "Best Resort Course" in the Golfer's Choice Awards. A short drive away are the popular Bootleg Gap, Wildstone, Shadow Mountain and St. Eugene Mission Golf Resort (another Les Ferber championship golf course). Other recreational activities to enjoy right at your doorstep include: mountain biking, horseback riding, hiking, heli-hiking, fly fishing, river rafting, kayaking, snow shoeing, Nordic skiing, skating, and much more.

The Suites

Studio Suite: 460 square feet. Includes a king size bed, an open living area with a TV, sofa bed, gas fireplace, and a full size kitchen.

One Bedroom Suite: 500 square feet. Includes a king size bed in a separate bedroom with a TV, a separate living area with TV, sofa bed, gas fireplace, balcony and full size kitchen.

Two Bedroom Suite: 700 square feet. Includes a king size bed in the first bedroom a queen size bed in the second bedroom, TV in each bedroom, two bathrooms, a separate living area with a TV and sofa bed, gas fireplace, full size kitchen and balcony.

Polaris Lodge

Kimberley BC

Location

Nestled in the heart of the Kimberley Alpine Village, 100 feet from Kimberley Alpine Resort's quad chair ski lift and a cart path away from Trickle Creek Golf course.

Dining and Entertainment

On the ground floor of the Polaris Lodge is the spacious Stemwinder Restaurant. Open seven days per week during the ski season, the Stemwinder offers a menu with something for everyone as well as live, après ski entertainment every weekend.. During the remainder of the year, the Stemwinder is available for rental to host all types of private functions or corporate events.

Guest Amenities

Polaris Lodge offers free underground parking, high-speed WIFI internet access. Conference facilities, 24-hour fitness center, year round outdoor heated pool and spas, BBQ patio, and on-site coin operated laundry are all located next door at the Trickle Creek Lodge.

The Suites - Recently renovated décor in all the guest rooms.

Lock off: A standard hotel room. Includes a king size bed, TV, desk, bathroom and balcony.

One Bedroom Suite: Includes a queen size bed in a separate bedroom, a separate living area with TV, desk, sofa bed, gas fireplace, balcony, dining table for 4, fully equipped kitchen and a jacuzzi tub in bathroom.



One Bedroom Master Suite: Includes a King Size bed in a separate bedroom with a TV, a separate extra large living area with a TV, desk, sofa bed, gas fireplace, balcony, dining table for 6, fully equipped kitchen, washer and dryer and a jacuzzi tub in the bathroom.

***Two Bedroom Suite:** Includes everything found in the One Bedroom Master plus the Lock off standard room.

****Three Bedroom Suite:** Includes everything found in the Two Bedroom suite plus the Lock off standard room.